



mojobike.com.au

Mojo Bike – Assembly Instructions

Tools Required

- 5mm Hex Key
- 6mm Hex Key
- 8mm, 10mm, 15mm, 30mm open-ended spanners
- Phillips head screwdriver
- Waterproof grease

Unpacking

Congratulations on the purchase of your new Mojo Bike. Remove it from its box, either recycling the packaging or keeping it in tact should you need to pack your bike up in future.

Assembly

Step 1

Attach the seat to the seat post. Apply some grease to the inside of the seat tube and slide the seat post in to the minimum insertion mark. Tighten the seat post bolt and clamp the quick release. You will align the seat and tighten the post in a latter step.





mojobike.com.au

Step 2

Note: If your Mojo Bike includes an optional cane basket please refer to the 'cane basket installation instructions' at this point.

Grease the stem and press it into the head tube of the frame. Tighten the stem with the hex key adjustor.



Step 3

You are now ready to install the handlebars. Center the handlebars in the clamp and tighten the stem bolt so the handle bars are supported. You will align the handlebars and tighten in a latter step.



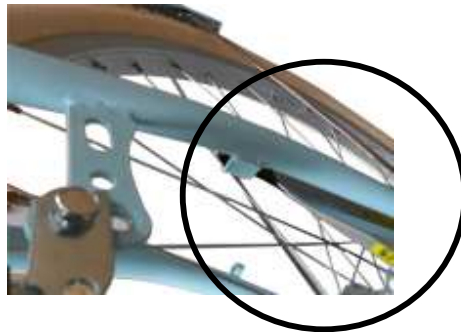
Step 4

Secure the front fender to the forks. Install the front headlamp, attaching the connecting wire as shown.



Step 5

Inflate the tyres to the recommended pressure. Slide the wheel up evenly into the fork dropouts. Tighten the nuts. Ensure the front brake is locked in the fork tab.



Step 5

You are now ready to install the pedals. Grease the pedal threads. Install the right-hand (relative to you when on the bike) pedal by turning it in a clockwise manner. The left-hand (relative to you when on the bike) pedal has a reverse thread. Install it by turning it in a counter-clockwise manner. Tighten the pedals with the open-ended spanner.



Step 6

You are now ready to connect and adjust the front brake. Refer to the manufacturers handbook for this step.

Step 7

Secure the bell to the handle bars.





mojobike.com.au

Step 8

You can now make your final adjustments to the alignment of the seat and handlebars.

You can now adjust the seat height and angle. Align to desired position and tighten.

You can now adjust the handlebars. Align to the desired position and tighten ensuring that you tighten the bolts evenly.

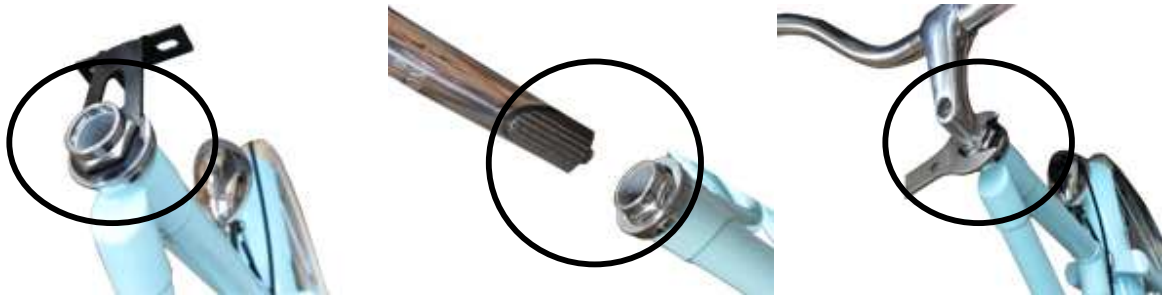
Your now ready for your first ride!

Be sure to check back at www.mojobike.com.au and subscribe to our newsletter to keep up on new models and upgrade parts. You can even join us on Facebook to share an image of your new ride.

Mojo Bike – Cane basket installation instructions

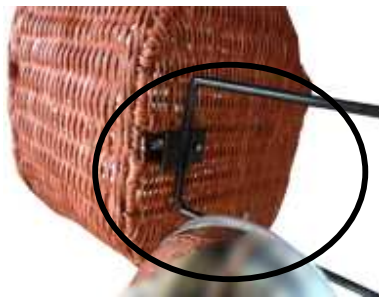
Step 1

Remove the head tube nut. Position the cane basket forward mounting bracket. Place the head tube nut on top of the bracket and secure. Grease the stem and press it into the head tube of the frame. Tighten the stem with the hex key adjustor. Tighten the head tube nut.



Step 2

Attach the vertical support brackets to the underside of the cane basket.

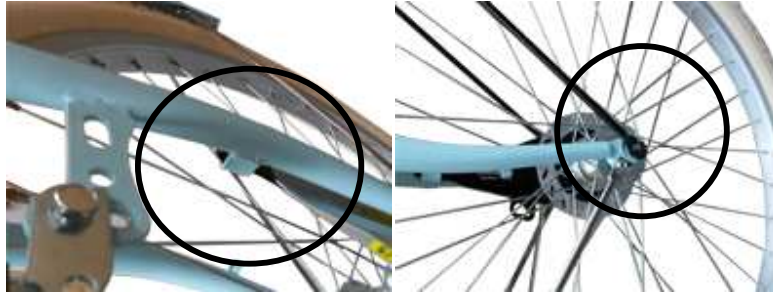




mojobike.com.au

Step 3

Inflate the tyres to the recommended pressure. Slide the wheel up evenly into the fork dropouts. Locate the cane basket support brackets on the outside of the forks. Tighten the nuts. Ensure the front brake is locked in the fork tab.



Step 4

Secure the cane basket to the forward mounting can basket mounting bracket.



You can now reenter the Mojo Bike – Assembly Instructions at step 3 to complete the assembly of your bike.